



MSM-226M

Threaded Magnet M6

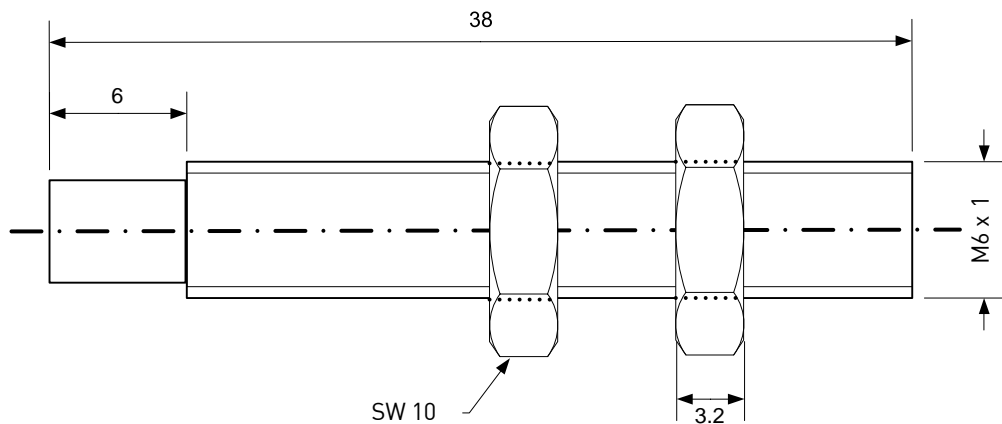


Data

| | |
|------------------|----------------------|
| Housing material | brass, Nickel plated |
| Potting material | Epoxy, black |
| Orientation | axially |

| | | |
|---------------------------------|-------------------------|-----------|
| Magnetic Material | N30H | |
| Remanence Br | mT | 1105 |
| Coercivity HcB | kA/m | 836 |
| Coercivity HcJ | kA/m | 1274 |
| Energy Product (BH) max. | kJ/m ³ | 235 |
| Magnetic Moment M | x10 ⁻⁶ Vs cm | 14,6 |
| Operating Temperature | °C | -20 to 85 |
| Temperature Coefficient Tk (Br) | %/°C | -0.11 |

All Dimensions in mm



Customized types , other magnet material and high temperature grades available