

## MS-2210M-7



## MS-2210M-7

Normally Closed Reed Sensor

### Electrical Characteristics @ 25 °C

Contact form		B
Contact rating max.	W / VA	5
Switching voltage max.	VDC	175
	VAC	120
Switching current max.	A	0.25
	A	1.5
Carry current max.	A	1.5
Breakdown voltage min.	VDC	200
Total resistance max. (initial)	mΩ	200
Insulation resistance min.	Ω	10 <sup>9</sup>

### Features

- Adjustable switching point
- Metal housing with M10 thread
- Mechanically protected
- Various sensitivity ranges available

### Magnetical Characteristics (of unmodified Reed Switch) @ 25 °C

Pull in range available	AT	15 - 30
Drop out min.	AT	5
Test coil	TC	200
Test equipment tolerance	± AT	2

### Approvals



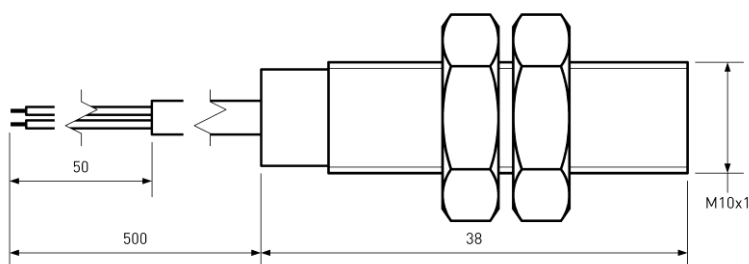
### Operating Characteristics (of unmodified Reed Switch) @ 25 °C

Switching frequency max.	Hz	100
Resonant frequency typ.	Hz	1100
Operate time max. (incl. bounce)	ms	0.7
Release time max.	ms	1

### Environmental Characteristics

Operating temperature	°C	-20 to +85
Vibration (50-2000 Hz)	g	30
Shock (1/2 sin 11 ms)	g	50

### Dimensions in mm



### Ordering Information

Packing Unit	0 pcs
Weight per piece	0 g
Weight per package	0 g
Standard AT Ranges	
	2 = 15 to 20 AT
	3 = 20 to 25 AT
	4 = 25 to 30 AT

### Ordering Example

MS-2210M-7-2-0500 describes  
MS-2210M-7 with 15-20 AT

MS-2210M-7



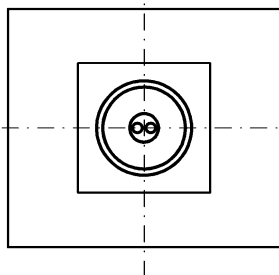
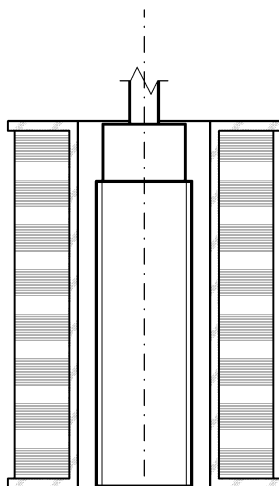
**MS-2210M-7**

Normally Closed Reed Sensor

Material Information

	Material	Colour
Housing	Brass, Nickel plated	
Cable	UL 2464, AWG 24, 50 mm dismantled, 4 mm stripped and tinned	Jacket: black, wires: black and red
Potting compound	Epoxy	black
Nuts	Brass, Nickel plated, M10, 2 pcs separately packed	

Test Procedure of final Reed Sensor



Test Coil placed in vertical position

Reed Sensor axially centered in Test Coil

Measured without nuts

Test Parameters

Test coil	TC-324
Test programs	
AT range	Test program
2 =	-2
3 =	-3
4 =	-4

Remarks

When mounted onto ferromagnetic parts switching distance of MS-2210M-7 may reduce.  
Electromagnetical influences and magnetic fields may change the switching behaviour of the sensor.

Matching actuator MSM-2210 available as well.